

# Introduction:



Ralph Pettingell, Warren Johnson, Ryan Gathmann, Stephanie Tinnin, Kyle Meason

# Introduction:

## Liu Jiakun

Born in Chengdu, Sichuan Province in 1956. Graduated from Department of Architecture of Chongqing Institute of Architecture and Engineering in 1982. Established JiaKun Architect and Associates, involved in architectural design, interior design and landscape design in 1999.



# Introduction:

## Liu Jiakun (continued)

### Works:

Chinese Young Architects' Experimental Works Exhibition in August 1999.

Chinese House Construction Document exhibition in Shanghai in March 2000.

The 1st "Liang Sicheng" Biennial Architecture Designing Exhibition in Beijing in April 2000.

Tumu – Chinese Young Architects' Work Exhibition in Berlin in September 2001.

Shanghai Biennale 2002 Alors, la Chine? – Chinese Contemporary Architecture at Pompidou Center, Paris in 2003.

# Introduction:

## Jean Nouvel

Born August 12, 1945 in Fumel. He was educated at the École des Beaux-Arts in Paris. He was a founding member of *Mars 1976* and *Syndicat de l'Architecture*. Brad Pitt and Angelina Jolie's daughter Shiloh Nouvel Jolie-Pitt was named after him, as Pitt is a fan of his work.



# Introduction:

## Jean Nouvel (continued)

- 2006 - Minneapolis, MN – Guthrie Theater [1]
- 2006 - Paris, France – Musée du quai Branly
- 2005 - Madrid, Spain – Reina Sofía Museum expansion
- 2003 - Barcelona, Spain – Torre Agbar (Office) [2]
- 2002 - Murten, Switzerland – Monolith of Expo.02 [3]
- 2001 - Cologne, Germany – KölnTurm [4]
- 2001 - Prague, Czech Republic – Andel (Office / Retail) [5]
- 2001 - Vienna, Austria – Rehabilitation of the Gasometer (Housing / Retail)
- 2000 - Lucerne, Switzerland – Cultural and Congress Center (Performance Space / Conference Hall / Museum / Restaurant)
- 2000 - Lucerne, Switzerland – Reconstruction of The Hotel (Hotel / Restaurant-Bar) [6]
- 2000 - Mons, Belgium – Science Park (Museum)
- 2000 - Nantes, France – Palais de Justice (Institutional) [7]
- 1999 - Bregenz, Austria – Interunfall (Office / Housing)
- 1999 - Rueil-Malmaison, France – Foundation Cognac-Jay (Hospital)
- 1999 - Strasbourg, France – Schutzenberger Brewery (Restaurant-Bar)
- 1999 - Wismar, Germany – Technology Center (Office)
- 1998 - Paris, France – Musée de la Publicité (Museum)
- 1998 - Tokyo, Japan – Dentsu Tower (Office / High-Rise)

# Introduction:

## Luyeyuan

Location: Yunqiao Village, Xinmin Town, Pi County, Chengdu, Sichuan  
Site Area: 6.670 square meters  
Building Area: 1.037 square meters  
Floor Area: principle part 990 square meters, rebuilt straw house 200 square meters, subordinate building 200 square meters  
Client: ZHONG Ming  
Project Designer: LIU Jiakun (Collaborator: WANG Lun)  
Structure Designer: ZHAO Ruixiang  
Design: 2-6/2001  
Construction: 6/2001-7/2002  
Contactor: GoArchit Art Engineering Co., Ltd., Sichuan  
Materials: Reinforced Concrete, Shale Brick, Pebble, Blue Stone, Glass and Steel  
Cost: 3.200.000 RMB

# Introduction:

Torre Agbar

Building Project

Promoter: Inmobiliaria Layetana

Architects: AJN and b720

Structure: Obliols/Brufau

Builder: Dragados/ Axima/ Emte

Interior Design Project

Architect/Audit/Lobby/Top Management: b720

advised by AJN

Architect/Cafeteria/Floor Type/Furnishings: GV

Arquitectura (Garcia-Ventosa Arquitectos)

Project Management Engineering: Master

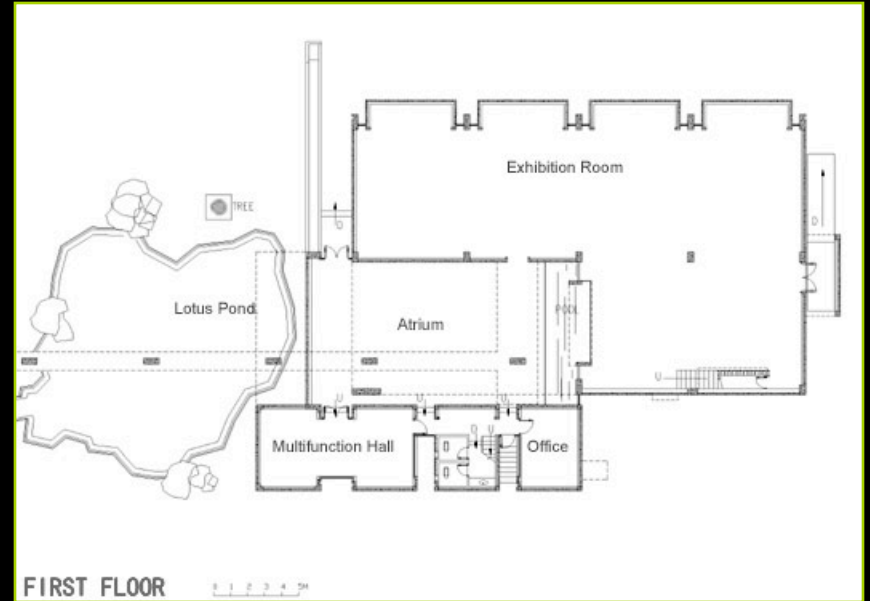
Ingeniera

Builder: ACSA/Dragados

General Management: Agbar Servicios

Compartidos

# program:



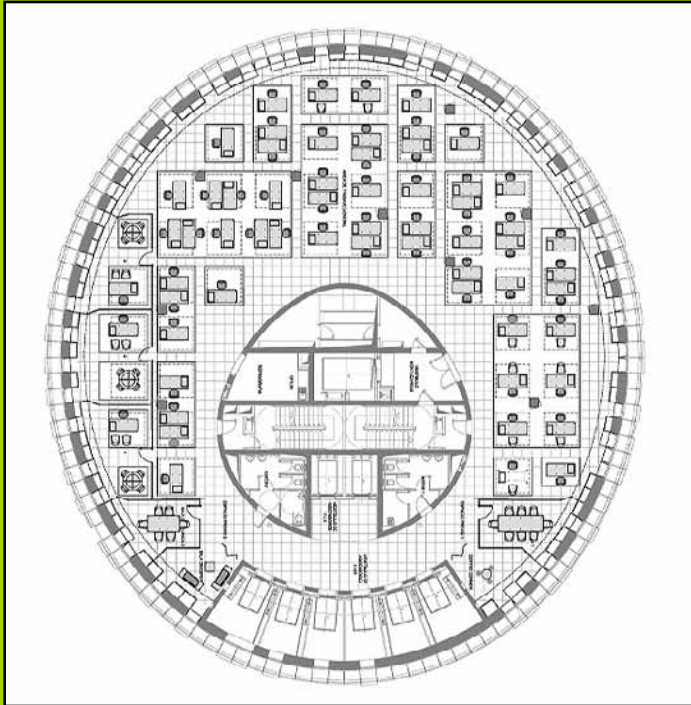
FIRST FLOOR



Ralph Pettingell, Warren Johnson, Ryan Gathmann, Stephanie Tinnin, Kyle Meason



# program.



Ralph Pettingell, Warren Johnson, Ryan Gathmann, Stephanie Tinnin, Kyle Meason

# site context:



Ralph Pettingell, Warren Johnson, Ryan Gathmann, Stephanie Tinnin, Kyle Meason

# Site context.

Torre Agbar



Ralph Pettingell, Warren Johnson, Ryan Gathmann, Stephanie Tinnin, Kyle Meason

# historical context



Ralph Pettingell, Warren Johnson, Ryan Gathmann, Stephanie Tinnin, Kyle Meason

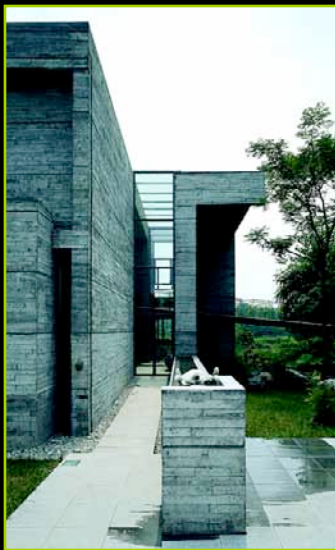
# Historical context

Corre Agbar



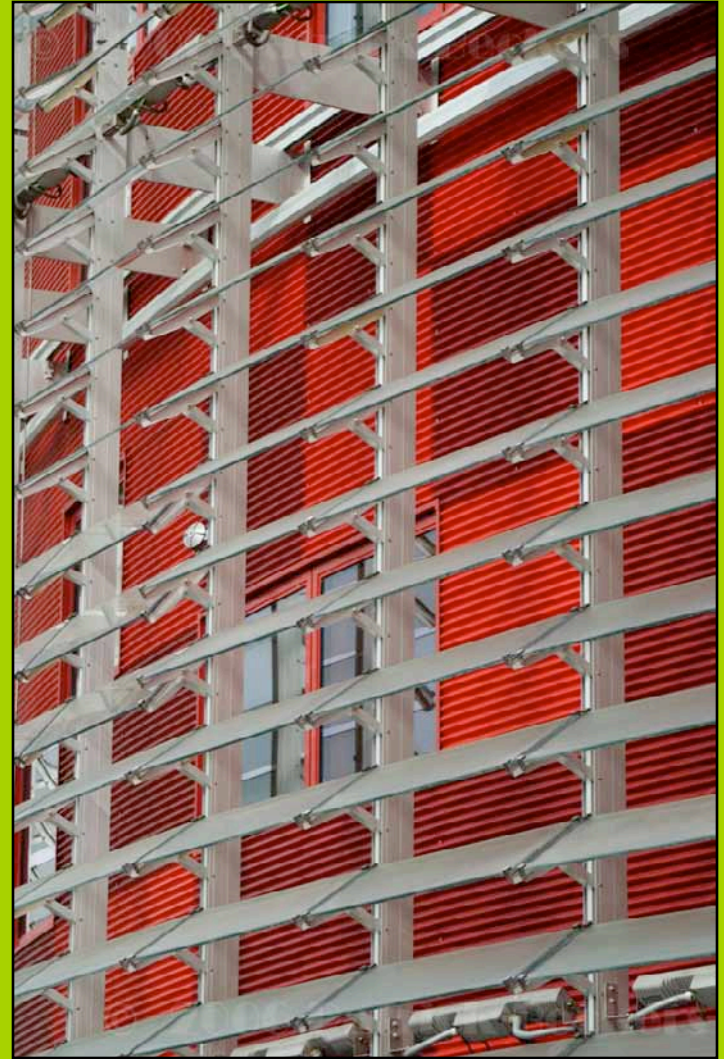
Ralph Pettingell, Warren Johnson, Ryan Gathmann, Stephanie Tinnin, Kyle Meason

# aesthetics:



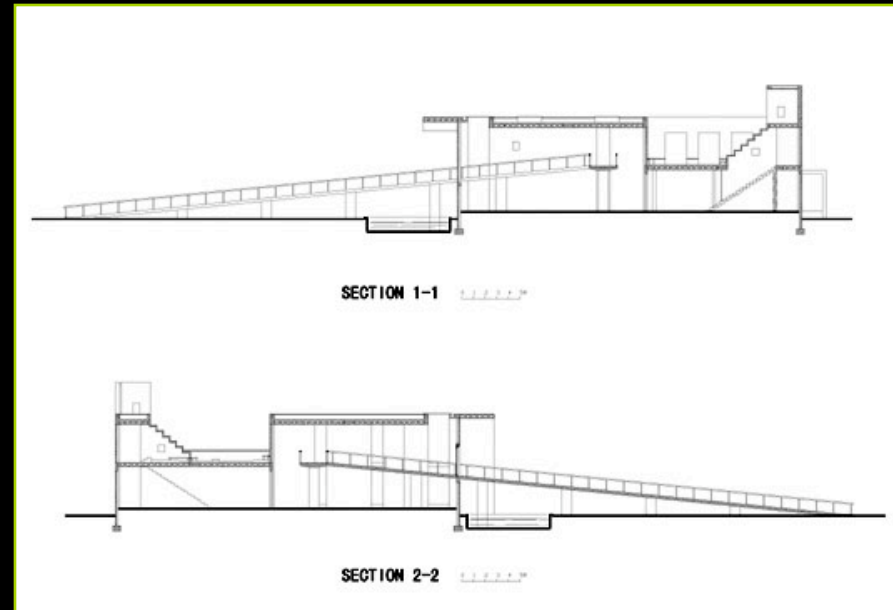
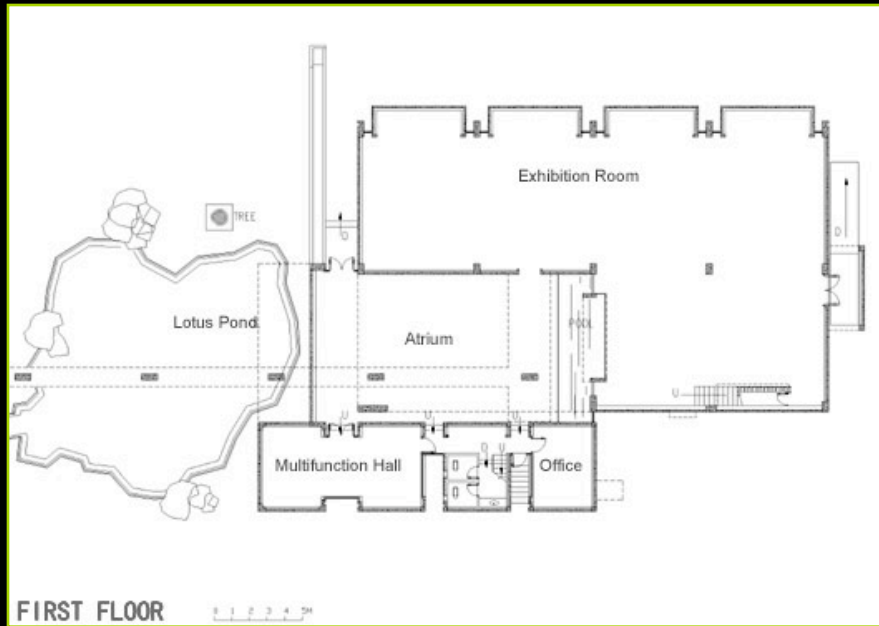
Ralph Pettingell, Warren Johnson, Ryan Gathmann, Stephanie Tinnin, Kyle Meason

# aesthetics:



Ralph Pettingell, Warren Johnson, Ryan Gathmann, Stephanie Tinnin, Kyle Meason

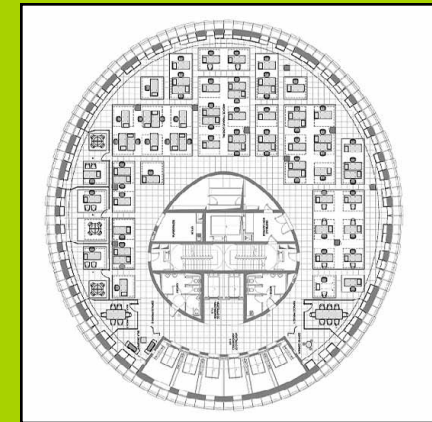
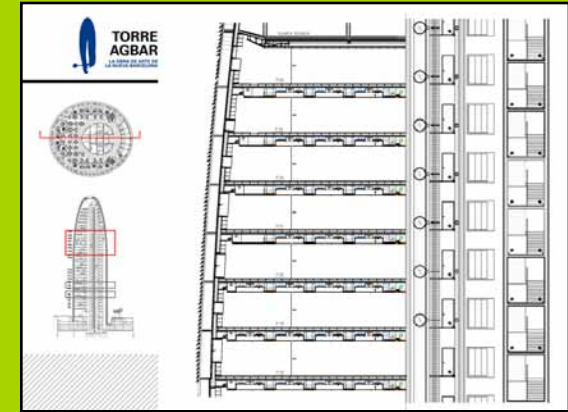
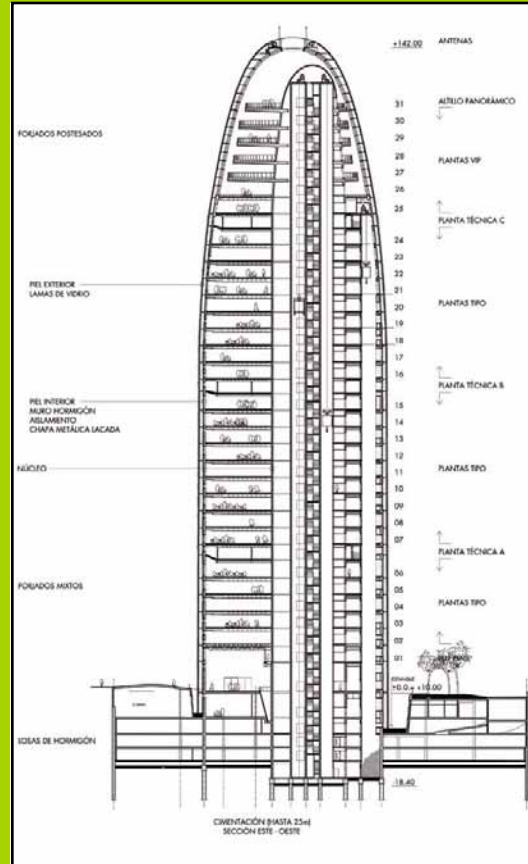
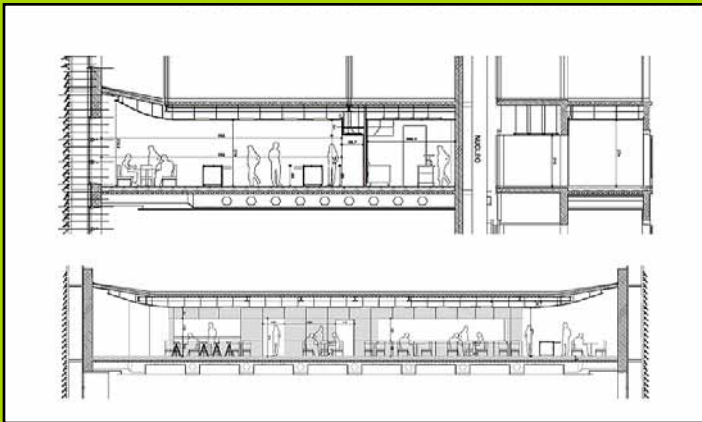
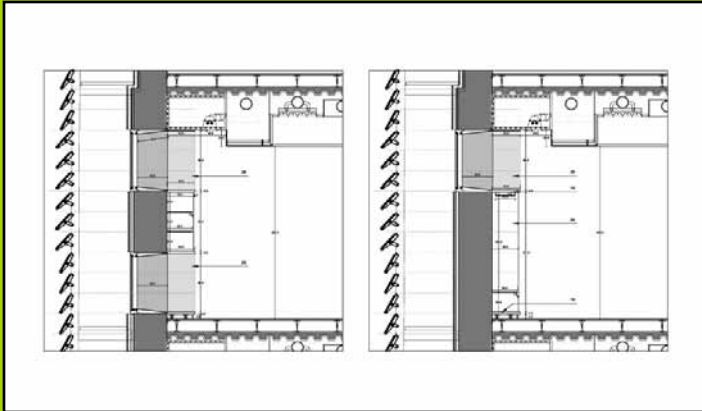
# structure:



Ralph Pettingell, Warren Johnson, Ryan Gathmann, Stephanie Tinnin, Kyle Meason



# structure:



# structure:



# economics:

Cost: 3.200.000 RMB



Ralph Pettingell, Warren Johnson, Ryan Gathmann, Stephanie Tinnin, Kyle Meason

# economics:

cost:: \$125,000,000

# WORKS CITED:

[http://archrecord.construction.com/china/1\\_projects/luyeyuan.asp](http://archrecord.construction.com/china/1_projects/luyeyuan.asp)

[http://archrecord.construction.com/ar\\_china/BWAR/0604-01\\_Luyeyuan.asp](http://archrecord.construction.com/ar_china/BWAR/0604-01_Luyeyuan.asp)

[http://www.world-architects.com/index.php?seite=world\\_profile\\_architekten\\_detail\\_en&system\\_id=5329](http://www.world-architects.com/index.php?seite=world_profile_architekten_detail_en&system_id=5329)

<http://archtechnophilia.blogspot.com/2007/02/luyeyuan-stone-sculpture-museum-china.html>

<http://architecture.mit.edu/calendar/liu.html>

<http://myfavoritebuilding.com/?p=53>

[http://www.chinese-architects.com/index.php?seite=cn\\_profile\\_architekten\\_detail\\_en&system\\_id=5329](http://www.chinese-architects.com/index.php?seite=cn_profile_architekten_detail_en&system_id=5329)

# WORKS CITED:

<http://www.geocities.com/medit1976c/agbar.htm>

[http://www.architectureweek.com/2006/0913/design\\_4-1.html](http://www.architectureweek.com/2006/0913/design_4-1.html)

<http://www.torreagbar.com/>

[http://en.wikipedia.org/wiki/Torre\\_Agbar](http://en.wikipedia.org/wiki/Torre_Agbar)

<http://www.aviewoncities.com/barcelona/torreagbar.htm>

<http://www.arcspace.com/architects/nouvel/agbar/agbar.html>

[http://www.peri.de/ww/en/pub/projects.cfm/fuseaction/diashow/reference\\_ID/275/referencecategory\\_ID/6/currentimage/3/imgpath/peri%5Fes%5Ftorre%5Fagbar%5F2%2Ejpg.cfm](http://www.peri.de/ww/en/pub/projects.cfm/fuseaction/diashow/reference_ID/275/referencecategory_ID/6/currentimage/3/imgpath/peri%5Fes%5Ftorre%5Fagbar%5F2%2Ejpg.cfm)

Höweler, Eric, 1972- Skyscraper / Eric Höweler. New York : Universe, 2003.

# CONCLUSION:



Ralph Pettingell, Warren Johnson, Ryan Gathmann, Stephanie Tinnin, Kyle Meason

