



Visioning Document for the Construction of
the Zen Meditation Center of New Orleans

Visioning Document for the Construction of

the Zen Meditation Center of New Orleans

TABLE OF CONTENTS

04 Vision

06 Overview

08 Lineage/Bios/History

10 Concept

12 Features

22 Preliminary Cost Estimate

24 Acknowledgments

25 Credits

VISION



Grounded in meditation, Buddhist teachings and practice, **Zen Meditation Center of New Orleans** offers a compassionate place for the transformation of suffering. By building a strong and welcoming community, we create an environment for spiritual growth. With our heritage in the lineage of Suzuki Roshi and the Soto Zen tradition, we trust that when we pay attention to our own hearts and minds, compassion and wisdom emerge, creating harmony with others.



Left Page: The Zen Meditation Center of New Orleans bird's eye view

OVERVIEW



The project **envisions** a dedicated Zen Meditation Center in the historic residential neighborhood on a steady rebound from the devastation of hurricane Katrina. The intention is to provide the presence and stability of a dedicated Buddhist community in the heart of New Orleans.

After practicing together in a small shotgun house in New Orleans, our sangha, Mid City Zen, was provided with an opportunity to purchase a vacant property in the Uptown area. We decided to launch a fund-raising campaign and in just four months, we raised \$18,000 to buy the land! Encouraged by this support, we began to vision a fully dedicated Zen temple. We are committed to making our temple available to local organizations and for the needs of our neighborhood.



Left Page: The Mid-city Zen Sangha
Bottom: Do-gen

LINEAGE/BIOS/HISTORY





The **Zen Meditation Center of New Orleans** offers Soto Zen practice in the tradition of Shunryu Suzuki Roshi, the founder of the San Francisco Zen Center and author of influential book *Zen Mind, Beginner's mind*. The sangha is led by two priests who trained as residents at each of the San Francisco Zen Center's three temples.

Rev. Michaela O'Connor Bono began residential practice at Green Gulch Farm Zen Center in 2005 when she was displaced by hurricane Katrina. She completed several monastic training periods at Tassajara Zen Mountain Center, and was ordained as a priest in 2010. With the encouragement of her teacher, Ryushin Paul Haller, she returned home to New Orleans the following year to support the growth of Zen practice in her beloved city. Michaela serves as a founding board member of the USA branch of Sakyadhita Association of Buddhist Women and as a board member of the Buddhist Peace Fellowship.

Rev. Koji Dreher, a California native, entered monastic training at Tassajara at age 21 and remained a resident of the San Francisco Zen Center's temples until his 30th birthday when he and Michaela set off for New Orleans. He was ordained as a priest at Mahabodhi Temple in India in 2008 by his teacher Kosho McCall. In the Fall of 2013, Koji will serve as shuso (head monk) of the annual practice period at the Austin Zen Center. This marks his transition from being a senior student to being a practice leader.

CONCEPT



Left Page: Street view
Bottom Left: Kyo-Machiya, Kyoto Japan
Bottom Right: Camel-back Shotgun House, New Orleans

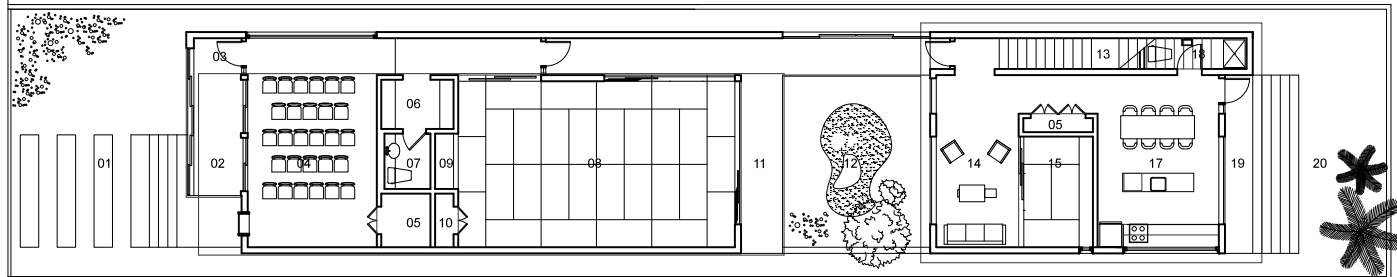
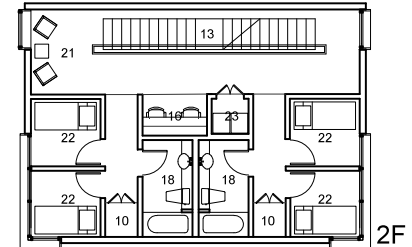
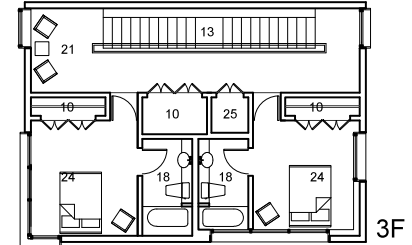
The design reflects the serene aesthetic sensibility of a Zen Temple gently adopting to the historic residential fabric of the city. This unity is achieved by a balancing act, a careful integration of the two unique yet related urban housing typologies; Kyo-machiya in Kyoto, Japan and the Camel-back Shotgun house of New Orleans aimed at creating a calm and quite place of contemplation paramount to the Zen practice.



FEATURES FRONT PORCH

LEGEND

- 01 Front Yard
- 02 Front Porch w/ Screen Doors
- 03 Main Entry
- 04 Community Meeting Room / Library
- 05 Storage
- 06 Genkan Shoe Rack
- 07 Restroom
- 08 Ceremonial / Meditation Hall (Hon-do / Zen-do)
- 09 Alter
- 10 Closet
- 11 En-gawa Deck
- 12 Tsubo-niwa Courtyard
- 13 Stair
- 14 Living room
- 15 Kaisan-do Guest room
- 16 Office Nook
- 17 Dining / Kitchen
- 18 Bathroom
- 19 Rear Porch
- 20 Rear Yard
- 21 Lounge
- 22 Single Bedroom
- 23 Washer / Dryer
- 24 Double Bedroom
- 25 Mech



Ground

The Front porch is one of the defining features of the New Orleans vernacular contributing to the street life and the urban landscape. The front room is the Shuryo study hall. It is a welcoming, inviting place open to the neighborhood as a meeting room to build our community and to strengthen our local ties. Sliding screen panels on the porch negotiate the exposure to the street depending on the occasion.



Left Page: Plans

Bottom Left: Front Elevation (screen drawn)

Bottom Right: Front Elevation (screen open)

FEATURES TSUBO-NIWA / EN-GAWA



The Tsuboniwa courtyard surrounded by the Engawa porch is the defining feature of Kyo-machiya and the heart and soul of the center. It literally breathes natural light and air into the architectural potential of a deep and narrow lot unique to New Orleans. As a visual focal point blurring the spatial boundary between the interior and exterior, the courtyard constantly reminds us of our relationship to the surrounding environment.

Left Page: View from the Engawa into the Zen-do
Bottom: Transverse Section



FEATURES ZEN-DO



Left Page: View from the Zen-do into the Tsubo-niwa
Bottom: West Elevation

The Zen-do is the heart of the temple, where meditation and ceremony are practiced daily. The traditional Zen-do and altar connect us to our ancestors and lineage, providing a place of true refuge. Carefully positioned to open up to the Tsuboniwa courtyard, the space comfortably accommodates over 30 meditating practitioners at once. A series of opaque Sho-ji sliding panels eliminate sensory distractions during the meditation practice.



FEATURES KAISAN-DO



The Kaisan-do, our founder's hall doubles as a guest room for visiting teachers and for interviews. It adjoins the formal living space open to the Tsubo-niwa courtyard across from the Zen-do. Separation is achieved through the sliding Sho-ji panels as needed. A communal dining kitchen with an island counter opens to the back yard through the covered porch. The stairs leads up to the private quarters for the resident practitioners and priests.



Left Page: View from the Engawa into the Living Space
Bottom Left: Transverse Section through Tsuboniwa
Bottom Right: North Elevation

FEATURES RESIDENTIAL QUARTERS



Left Page: View from the Residential Quarter into the City
Bottom: East Elevation

A residential sangha adds vitality to the spirit of practice at a Zen Center. A group of people living and practicing together brings stability to the center for those attending and depth of practice for those in residence. In this way, the **Zen Meditation Center of New Orleans** will be a true place of refuge in the heart of the city.



PRELIMINARY COST ESTIMATE

Description	unit cost	unit	ct.	unit	subtotal	Remark
Base Cost (per SQ of Living Area)	\$112.70	\$/sf	4,118	sf	\$464,098.60	
Feature Modification Cost						
additional full bath	\$10,186.00	\$/ct	3	ct	\$30,558.00	for residential
additional half bath	\$5,828.00	\$/ct	1	ct	\$5,828.00	for Zen-do
additional entry/exit	\$2,306.00	\$/ct	1	ct	\$2,306.00	for entry/exit for Zen-do
separate heating/ac	\$6,833.00	\$/ct	1	ct	\$6,833.00	separate ac unit for Zen-do
Feature Alternative Cost						
standing seam metal roofing						assume no change in cost
pier foundation						assume no change in cost
Additional Components Cost						
Porches	\$44.25	\$/sf	234	sf	\$10,354.50	
Hardscape	\$9.30	\$/sf	200	sf	\$1,860.00	
Sidewalks	\$3.45	\$/sf	240	sf	\$828.00	
Fencing	\$27.50	\$/lf	330	lf	\$9,075.00	
Fencing	\$11.20	\$/lf	30	lf	\$336.00	
Gate	\$160.00	ct	2	ct	\$320.00	
					\$532,397.10	national average construction cost
Location Factor			87	%	\$463,185.48	New Orleans, LA vs National Average
Contingency			10	%	\$46,318.55	unforeseen condition on site, labor, material etc
Design Consultant Fee			12	%	\$55,582.26	architectural, structural etc.
Furniture, Fixtures and Equipment			5	%	\$23,159.27	bed, sofa, shelving, tatami mats, fridge, washer, dryer etc. floor and desk lamps.
Grand Total					\$588,245.56	

The preliminary estimated project cost is based on “Square Foot Cost 2013” published by RSMMeans, a division of Reed Construction Data, LLC.

We are currently raising funds through individual donations and grants. If you are interested in contributing to the building of the **Zen Meditation Center of New Orleans**, you can do so in the following ways: visit our website www.zmcneworleans.org email us at: MidCityZenNola@gmail.com or call us (516) 776-2845. All donations are tax deductible. Zen Meditation Center of New Orleans is a 501 (c) (3) non-profit organization.



ACKNOWLEDGEMENTS

CLIENT

The Mid-city Zen Sangha

ARCHITECTURAL CONSULTANT

studioKT
Kentaro Tsubaki, RA.

CREDITS

Project Research

Koji Dreher & Michaela O'Connor Bono / The Mid-city Zen Sangha
Kentaro Tsubaki / studioKT

Project Design

Kentaro Tsubaki & Christine Foley / studioKT

Digital Rendering

Christine Foley / studioKT

Booklet Design

Kentaro Tsubaki / studioKT

ZEN MEDITATION CENTER OF NEW ORLEANS

