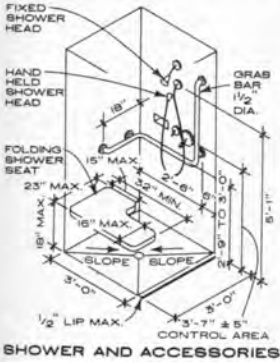
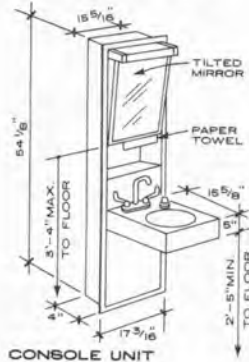


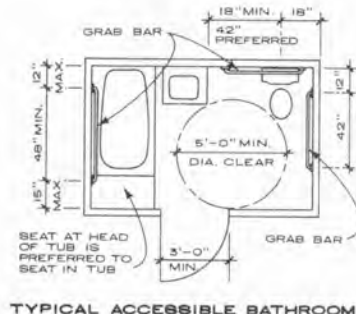
HEIGHT REQUIREMENTS FOR THE HANDICAPPED



SHOWER AND ACCESSORIES



CONSOLE UNIT

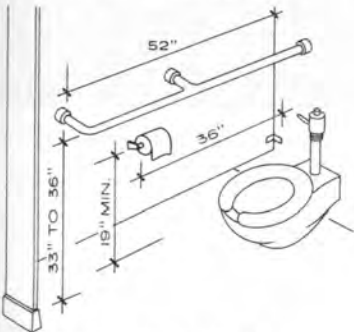


TYPICAL ACCESSIBLE BATHROOM

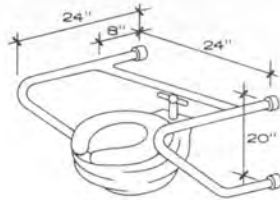
NOTES ON GRAB BARS

1. SIZE: 1 1/2 in. or 1 1/4 in. O.D. with 1/2 in. clearance at wall.
2. MATERIAL: Stainless steel or chrome plated brass with knurled finish, optional.
3. INSTALLATION: Concealed or exposed fasteners; return all ends to wall, intermediate supports at 3 ft maximum. Use heavy duty type bars and methods of installation.

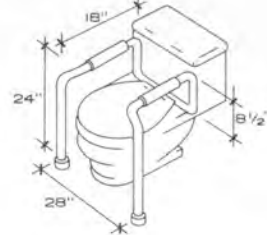
The provisions of the American National Standard, ANSI A117.1 must be consulted, as well as applicable local and federal regulations.



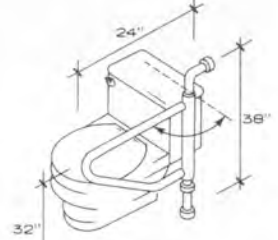
WHEELCHAIR COMPARTMENT



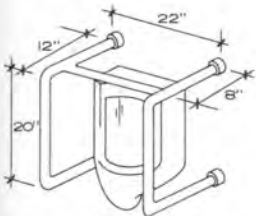
STRADDLE BAR



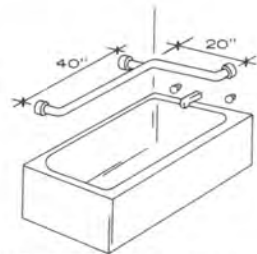
SAFETY ARM REST



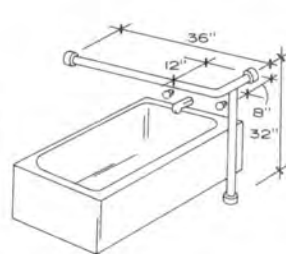
WING-AWAY BAR



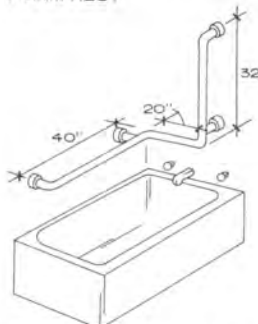
URINAL BAR



HORIZONTAL TUB BAR



CORNER BAR

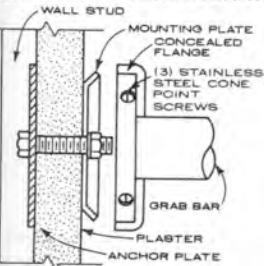


TUB WITH VERTICAL RAIL

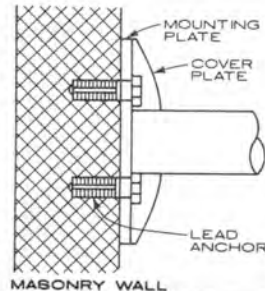


LAVATORY AID RAIL

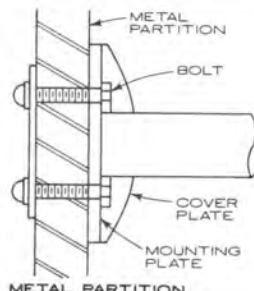
GRAB BAR CONFIGURATIONS



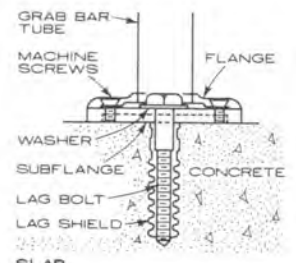
STUD WALL ATTACHMENT DETAILS



MASONRY WALL



METAL PARTITION



SLAB