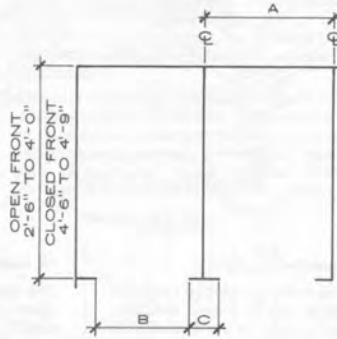
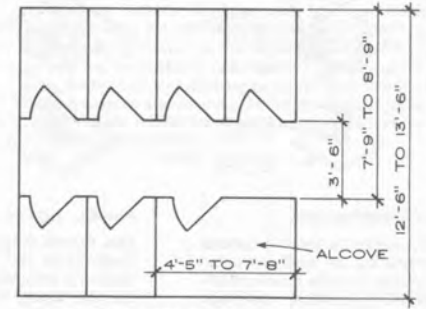


NOTES

1. Compartment types: ceiling hung (marble or metal), overhead braced, wall hung (metal only).
2. Metal finishes: baked-on enamel, porcelain enamel, stainless steel. Phenolic core, plastic laminate, solid polyethylene, tempered glass, and marble panels also are available.
3. A = standard compartment widths: 2 ft. 6 in., 2 ft. 8 in., 2 ft. 10 in., 3 ft. 0 in. (2 ft. 10 in. is used most frequently).
4. B = standard door widths: 1 ft. 8 in., 1 ft. 10 in., 2 ft. 0 in., 2 ft. 2 in., 2 ft. 4 in., 2 ft. 6 in. (2 ft. 0 in. metal doors are standard with marble compartments). Nonstandard sizes that sometimes are used: 1 ft. 11 in., 2 ft. 3 in., 2 ft. 5 in.
5. C = standard pilaster widths: 3 in., 4 in., 5 in., 6 in., 8 in., 10 in., 1 ft. 0 in. Nonstandard sizes that sometimes are used: 2 in., 7 in., 1 ft. 2 in.
6. D = standard panel widths: 18 in. to 57 in. in 1 in. increments. All panels are 58 in. high.
7. Wall hung models apply only to metal partitions.
8. Accessories include such items as paper holders, coat hooks, and purse shelves.

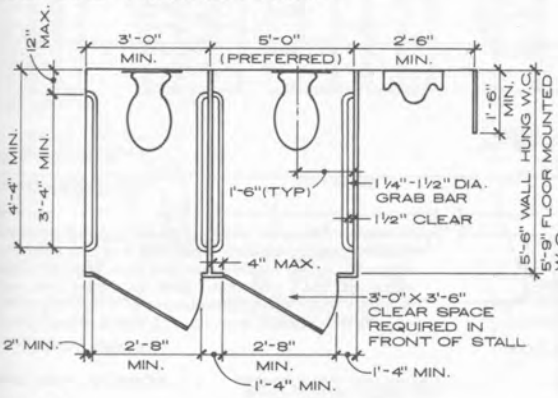


PLAN OF STANDARD W.C. COMPARTMENT (TYPICAL FOR METAL OR PLASTIC LAMINATE)

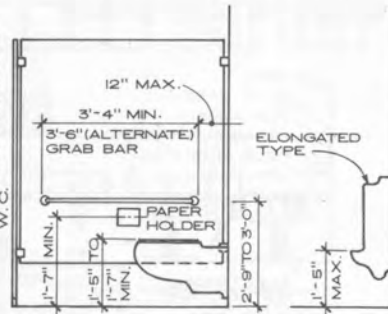


SPACE REQUIREMENTS

GENERAL PLANNING DATA

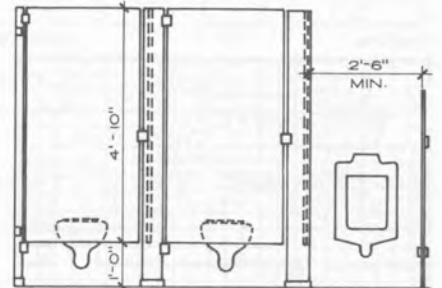


PLAN



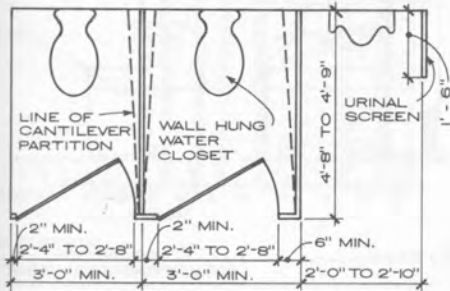
SECTION

SECTION AT URINAL

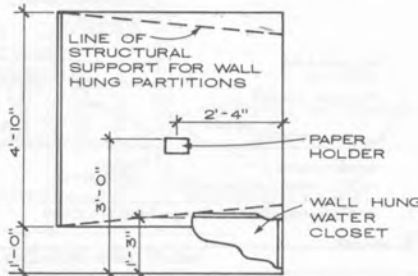


FRONT ELEVATION

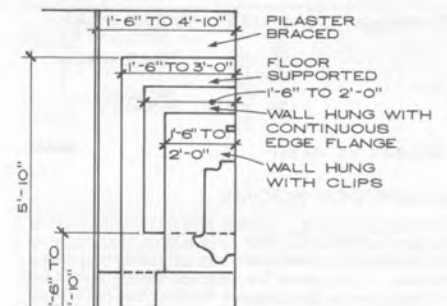
HANDICAPPED TOILET LAYOUT



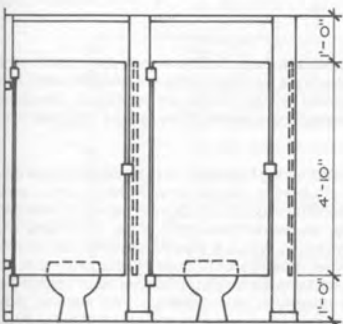
PLAN



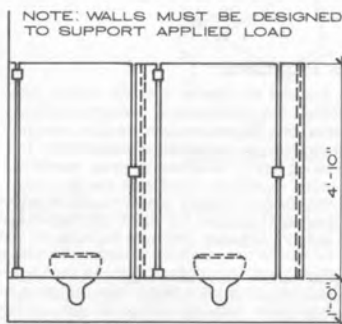
SECTION



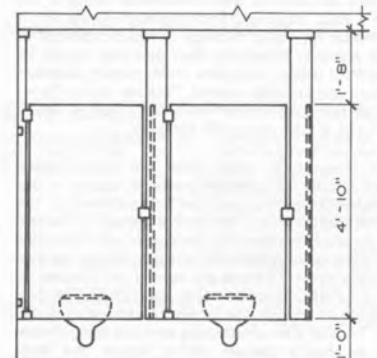
URINAL SCREENS



FLOOR MOUNTED



WALL HUNG



CEILING HUNG

METAL AND PLASTIC LAMINATE TOILET PARTITIONS